

C8S | Slat Top Conveyor 80



Application

Conveying tasks of all kinds

Technical data

Speed: from 5 m/min to 30 m/min

Drive power depending on conveyor speed and load ranging from 0.25 kW to 0.37 kW (230/400 V; 50/60 Hz; IP 54)

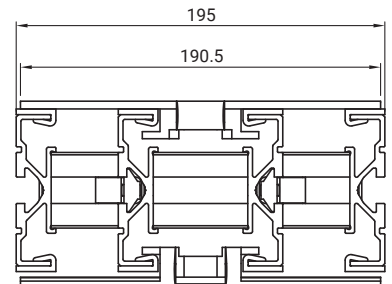
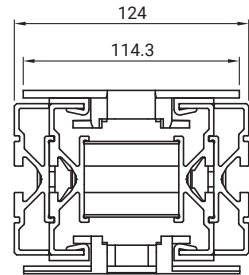
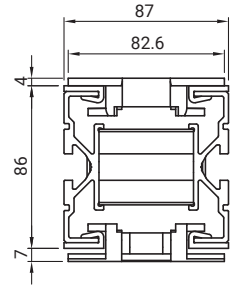
Max. total load of conveyed material: 150 kg
Temperature range: from -20°C to +40°C

Chain type

Standard application, adhesive and thus suitable for incline transport, suitable for accumulation operation, etc.

Center radii (chain)

Frame width 87mm = 200 mm
Frame width 124mm = 200 mm
Frame width 195mm = 400 mm



Side Guide for Conveyor
see page 50

DRIVE OPTIONS

Front end direct drive



Front end direct drive, left



Front end direct drive, right

DESIGN OPTIONS

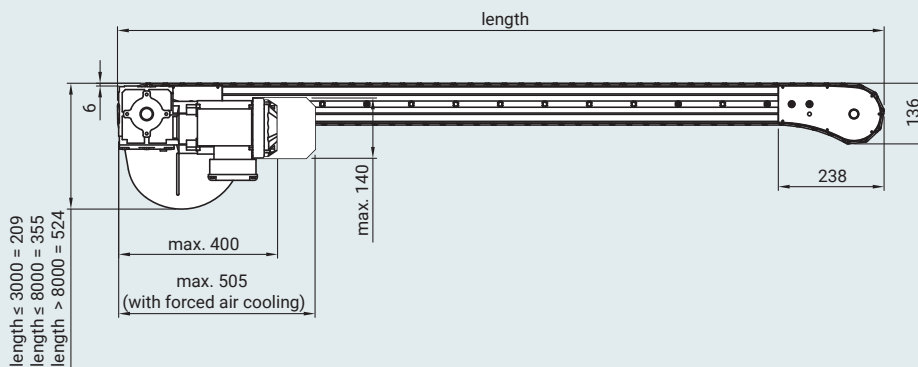
Side view



Top view



FRONT END DIRECT DRIVE



LENGTHS AND FRAME WIDTHS

Description	Min. length	Max. length	Max. frame width
C8S Slat Top Conveyor with front end direct drive	1000 mm	15000 mm	87 mm / 124 mm / 195 mm

1 Conveyors with special dimensions, speeds and angles are available on request.

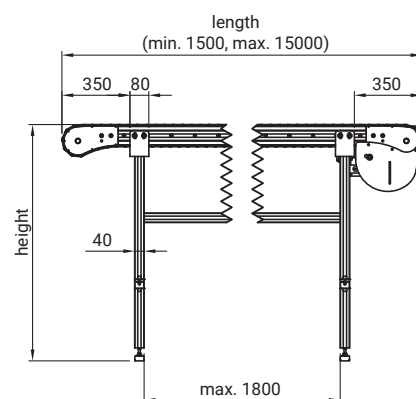
C8U | Stand for C8S



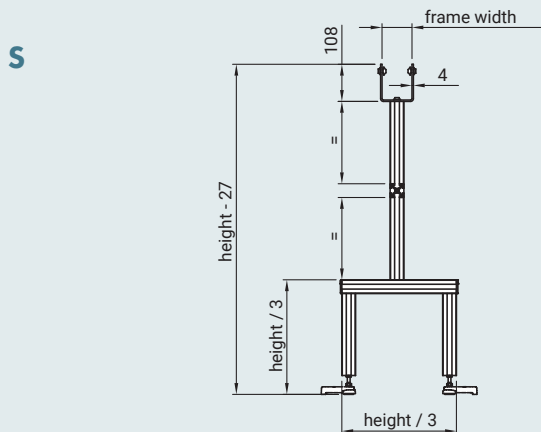
Application
Stand for Slat Top Conveyor 80

Technical data
Material: clear anodized aluminum;
galvanized die-cast zinc; galvanized steel;
rubber

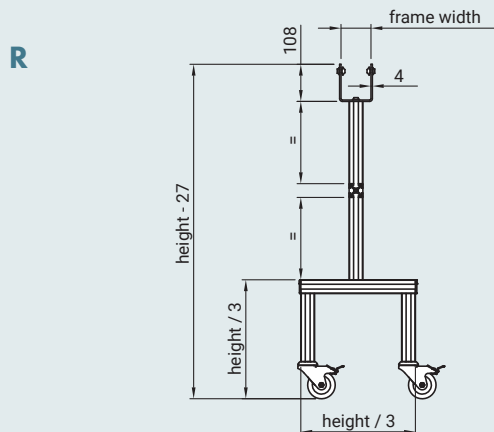
Scope of delivery
Stand segment fully assembled and attached
to the conveyor



STANDARD CONVEYOR STAND TYPES



Leveling Bases BAS4008
Height adjustment ± 20 mm



Swivel Castors with brake
CAS3080

ORDER CODE

Description	ORDER CODE ²			
	Frame width	Type	Length	Height
Stand for C8S	C8U	___	_ NN	___

¹ Optionally with Floor Mounting Plate BAP4500.

² Please complete the order code by adding the corresponding parameters for order processing.

Drawings: dimensions in mm