

INGENIOUSLY SIMPLE
SIMPLY INGENIOUS

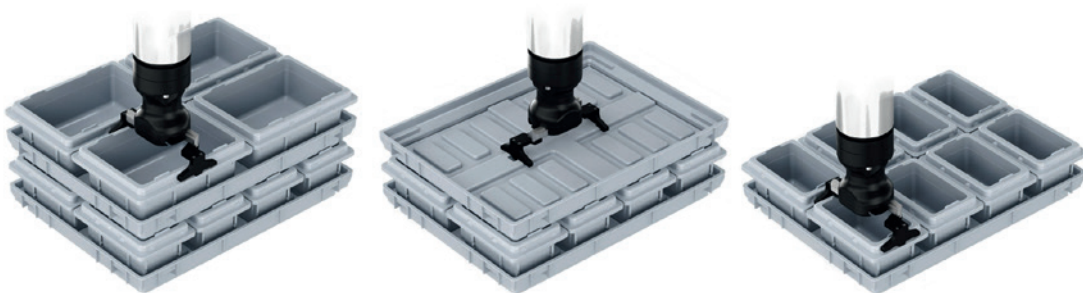
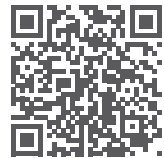


Small Parts Tote System

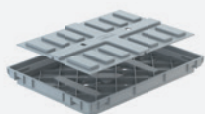
The ergonomic totes for bin picking and material supply

Flexibly combinable, our totes available in two sizes enable pre-picking on one tray or storage location. The low picking height and a design specially adapted to Kanban systems allow maximum efficiency at the workplace. In addition, the form-fitting shape offers optimum grippability for robots.

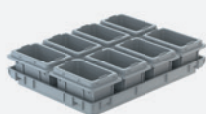
Curious?
Find more information
on our website.



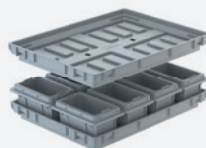
Modular and stackable, from totes to Euro-pallets



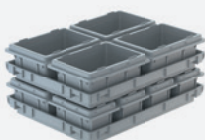
Tray as base with inlay



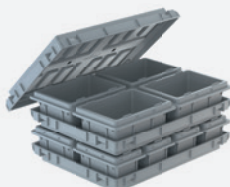
Tray with inlay and totes



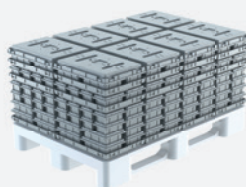
Tray used as sandwich board



Sandwich board with totes



Tray used as a lid



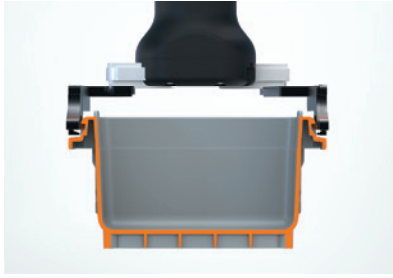
Stacked on a euro-pallet

Pre-picked in a single storage location

The Robotunits Tote System combines tray, inlay and small parts totes into a single, compact storage location. This is where all related parts are grouped together.

The modular, stackable tote system guarantees a high storage density, as well as a transport-safe and individual arrangement.

Features of tote, tray and inlay



Optimum robot grippability
due to integrated gripping points



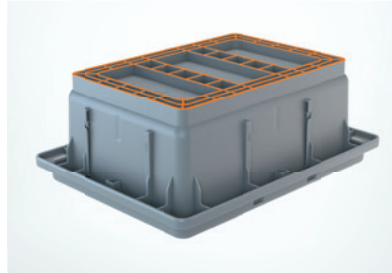
Can be stacked on top of each other
with reference line for max. filling height



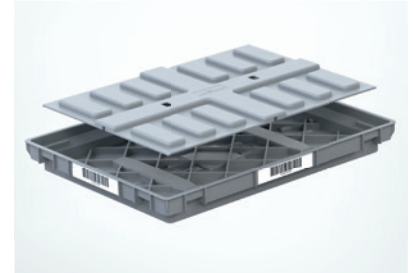
Tote Holder available as an accessory
for easy mounting on the T-slot



Stacking nubs
for non-slip transport



Ribbed base rim
for best rolling performance on roller tracks



Recess for RFID chip on the underside of
the tray
Inlay can be clipped in and out

Perfect in combination with our MBS PickStar

