

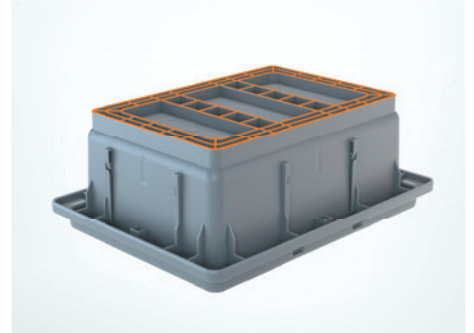
Tote system - Product features



Stacking nubs for non-slip transport



Tray can be used multifunctionally (e.g. as a tool or workpiece carrier)



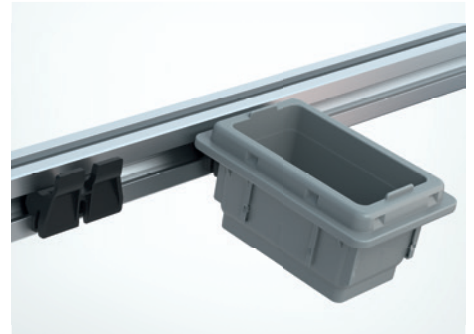
Ribbed base rim for best rolling performance on roller tracks



Stackable on top of each other with reference line for max. filling height

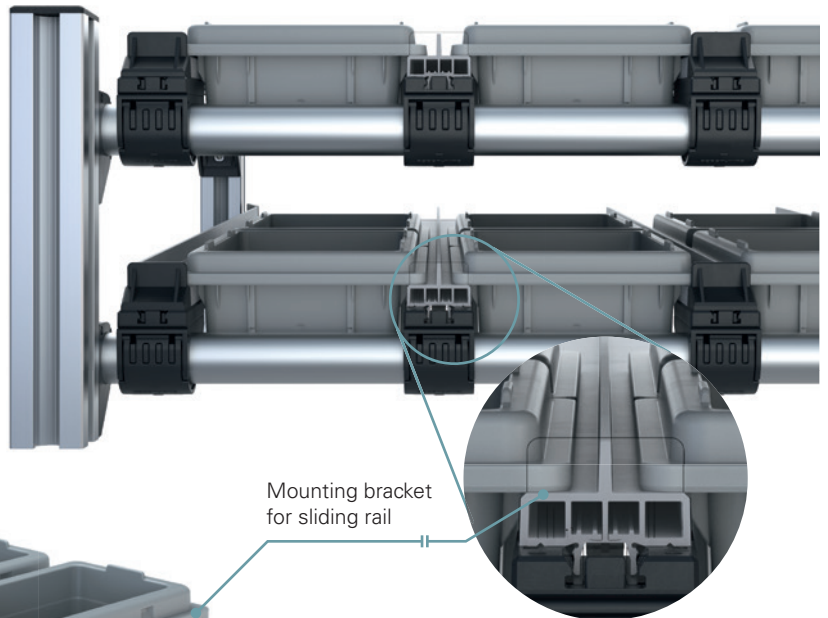


Optimal for being gripped by robots



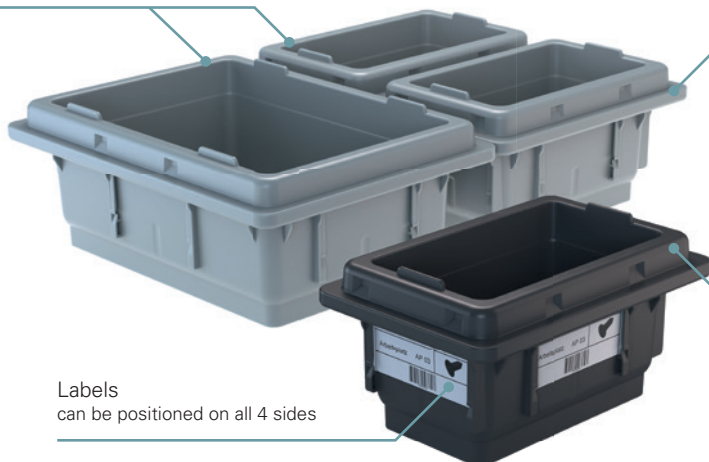
Box holders available in the accessories

Combination - ideal in combination with the MBS PickStar



Two combinable standard sizes

Mounting bracket for sliding rail

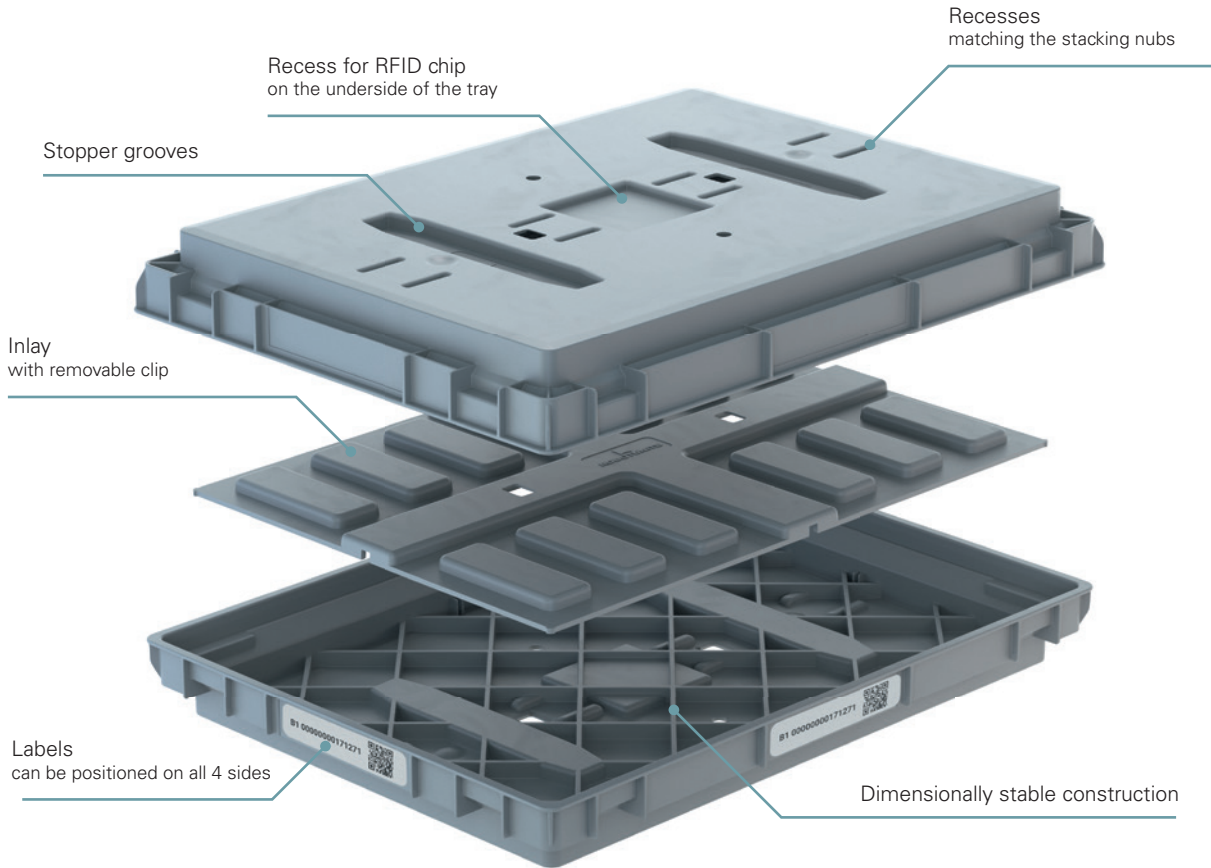


Labels can be positioned on all 4 sides

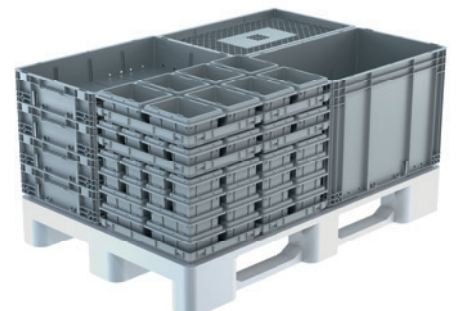
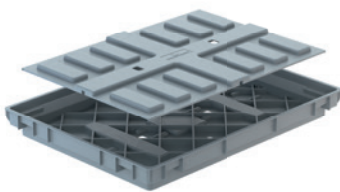


Also available as ESD version

Tray - Product features



Stackable - from tray to euro-pallet





Tote 150x100x75



Tote 200x150x75

Application

Small parts tote, compatible with the entire Robotunits Tote System:

- Dimensionally stable
- Automatable
- Stackable
- Ergonomic
- Labeling on all 4 sides (slide-in or stick-on)

Technical data

Material: PP, ESD is available on request

Temperature resistance:

-20°C to +60°C, briefly +75°C

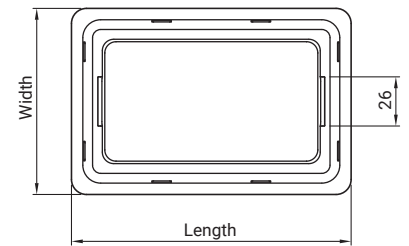
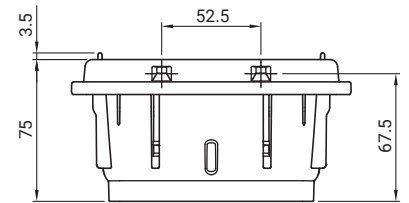
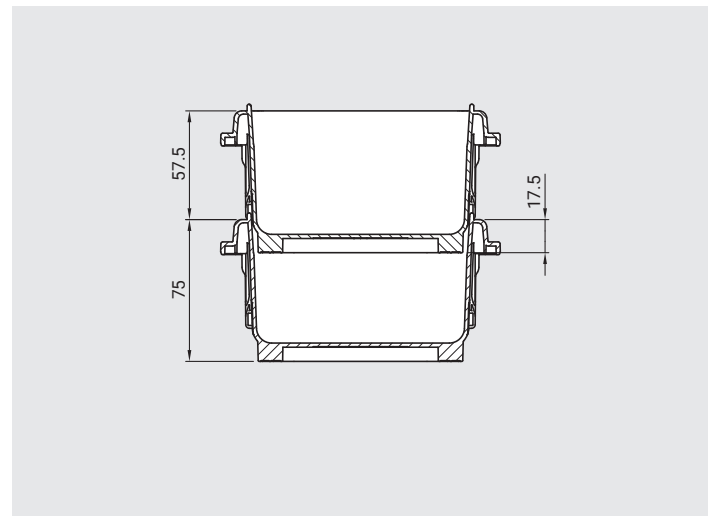
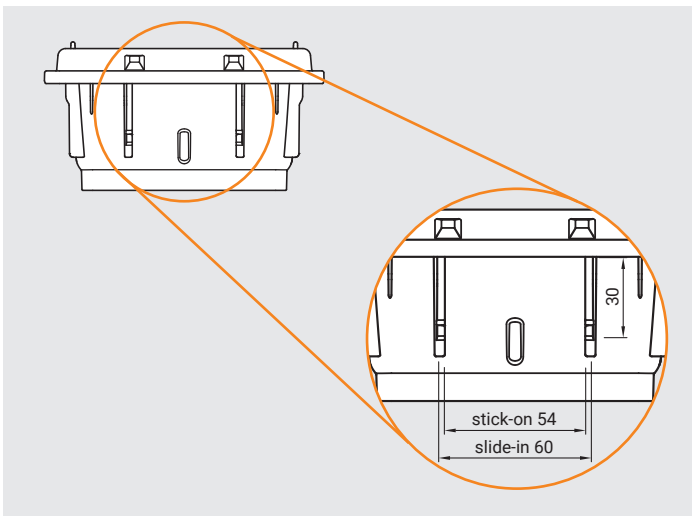
Load capacity

150x100 = 2.2 kg

200x150 = 4.4 kg

Stacking load

100 kg

**Label dimensions****Stacking dimensions****Order code**

Description	Outer dimensions		Inner dimensions		Volume: Liter	Order code	Weight/pc.
	Length	Width	Length	Width			
Tote 150x100x75, pack of 112 pcs.	148	98	110	60	0.45	BOX1510PAC0112	0.100 kg
Tote 200x150x75, pack of 56 pcs.	198	148	160	110	1.18	BOX2015PAC0056	0.170 kg

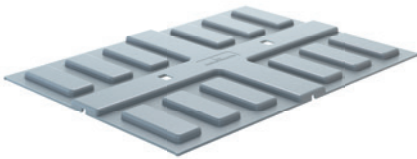
Drawings: Dimensions in mm

BOX 403_

Tray 400x300 / Inlay 400x300



Tray 400x300



Inlay 400x300



Tray with inlay 400x300

Application

Tray, compatible with the entire Robotunits Tote System

- Dimensionally stable
- Automatable
- Stackable
- Replaceable inlay
- Low noise on conveyor lines
- Identification through side and bottom recesses for coding (e.g. data matrix)
- Stopper grooves
- Water drainage openings

Technical data

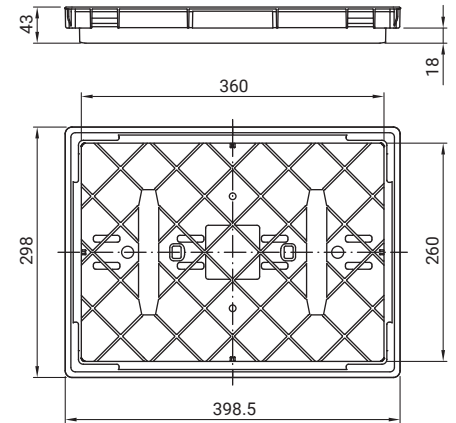
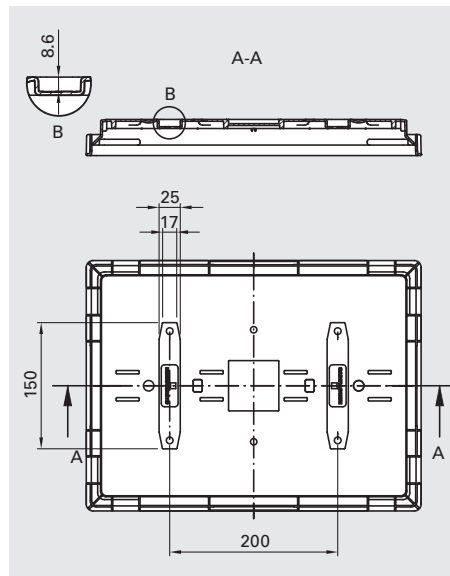
Material: PP, ESD is available on request

Temperature resistance:

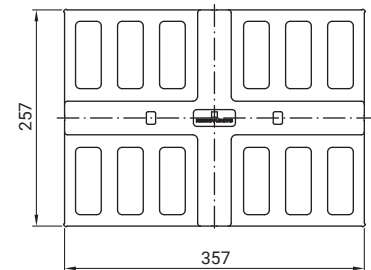
-20°C to +60°C, briefly +75°C

Load capacity

17.5 kg

Stopper groove

Tray 400x300



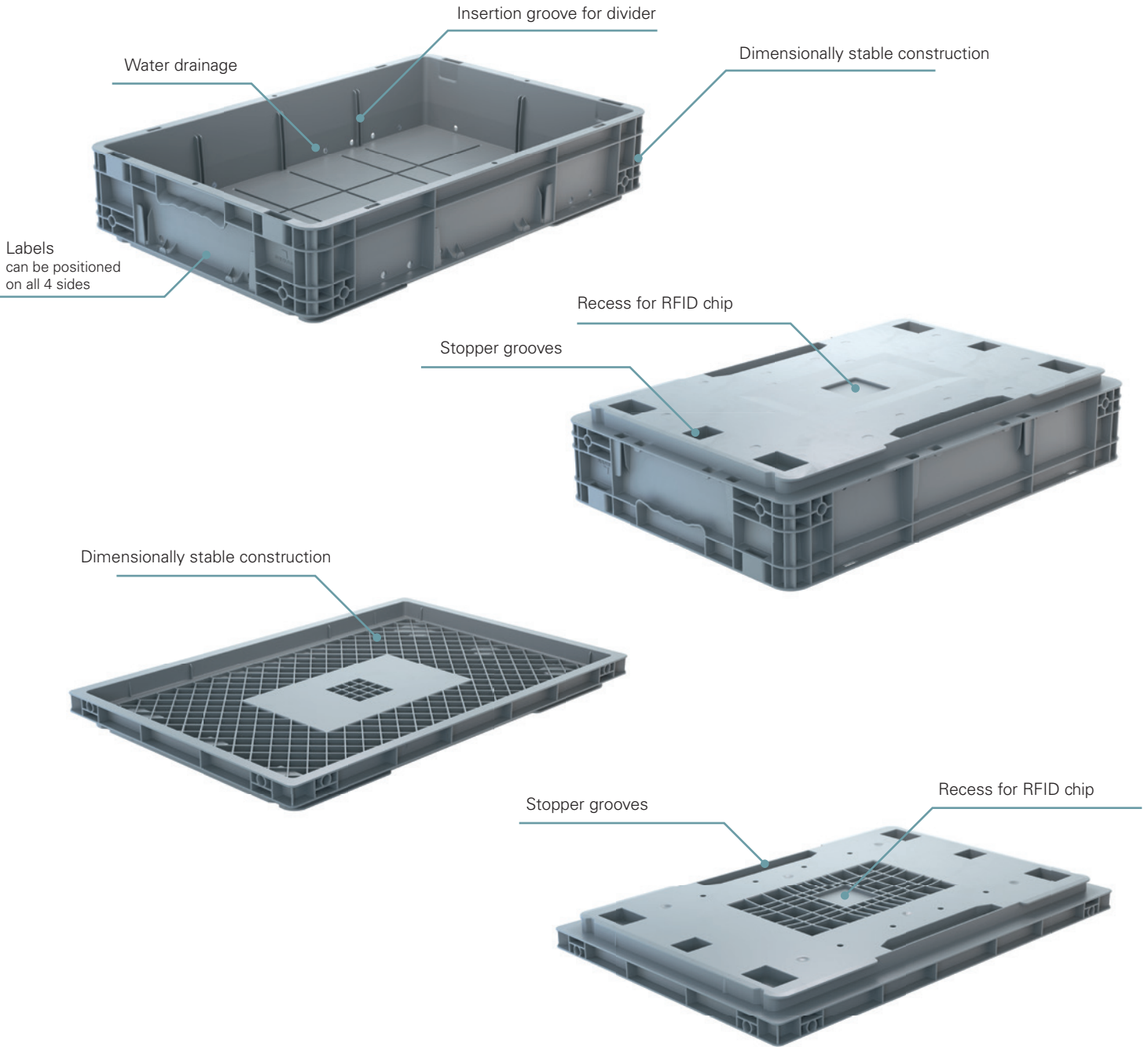
Inlay 400x300

Order code

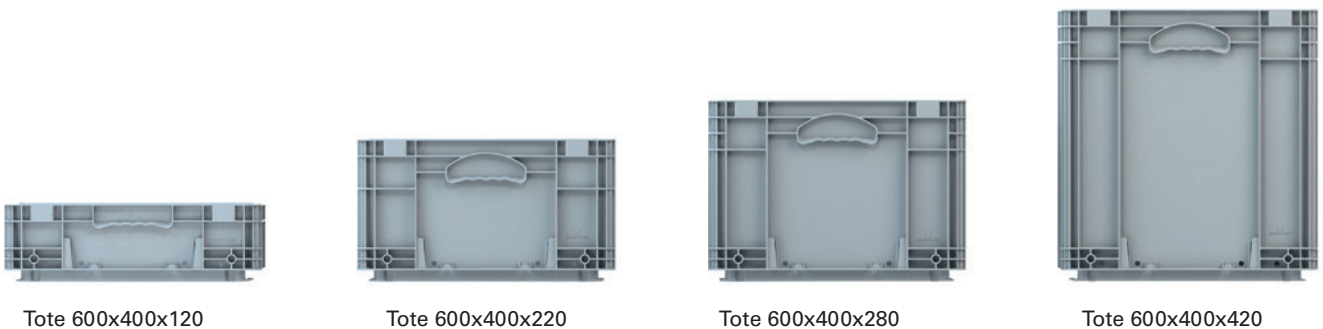
Description	Order code	Weight/pc.
Tray 400x300, pack of 264 pcs.	BOX4030PAC0264	0.455 kg
Inlay 400x300, pack of 264 pcs.	BOX4031PAC0264	0.335 kg

Drawings: Dimensions in mm

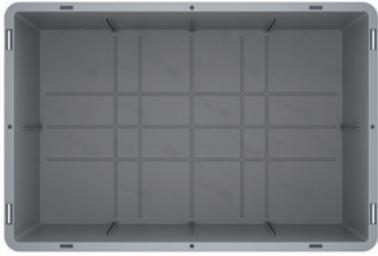
Tote system - Product features



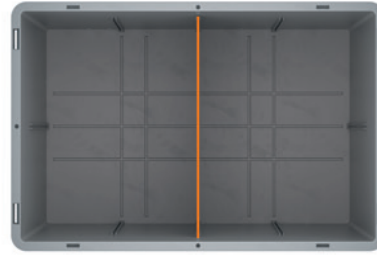
Totes - Four standard heights



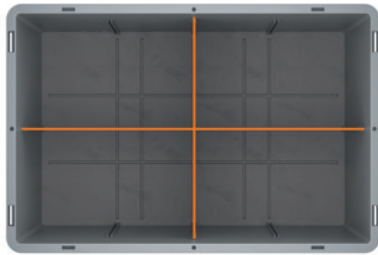
Dividers - Subdivision options



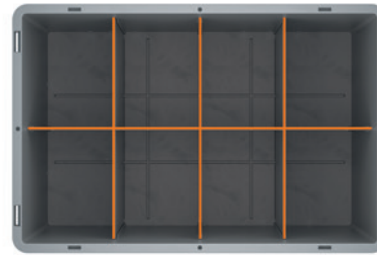
without division



2 sections



4 sections



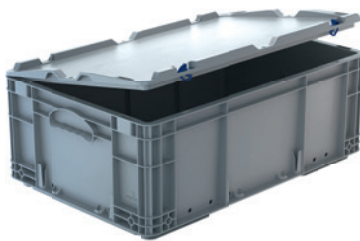
8 sections

Tote system - Lids

Standard lid



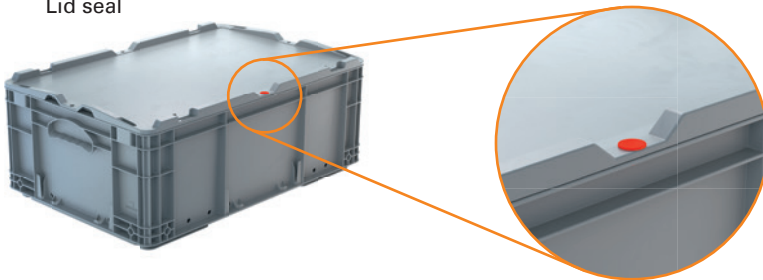
Hinged lid



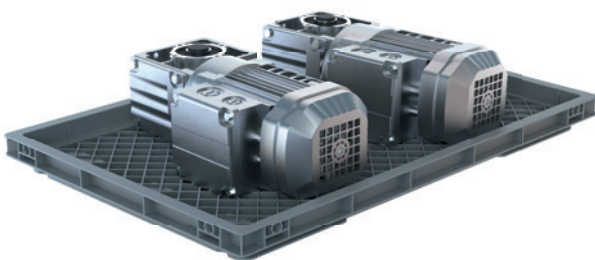
Crocodile lid



Lid seal



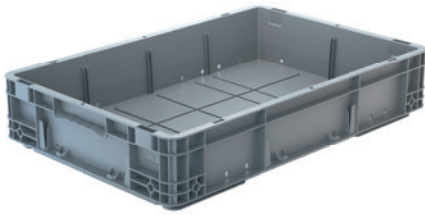
Tray - Applications



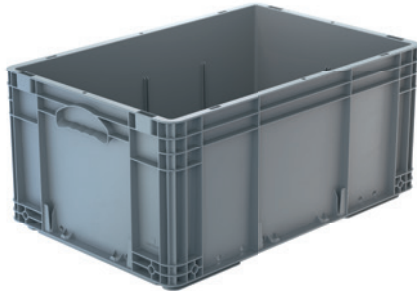
Tray 600x400



Tray 625x425



Tote 600x400x120



Tote 600x400x280

Application

Small parts tote, compatible with the entire Robotunits Tote System:

- Dimensionally stable
- Automatable
- Stackable
- Low noise on conveyor lines
- Closed handles (underside handles)
- Identification through side and bottom recesses for coding (e.g. data matrix)
- Stopper grooves
- Water drainage openings

Technical data

Material: PP, ESD is available on request

Temperature resistance:

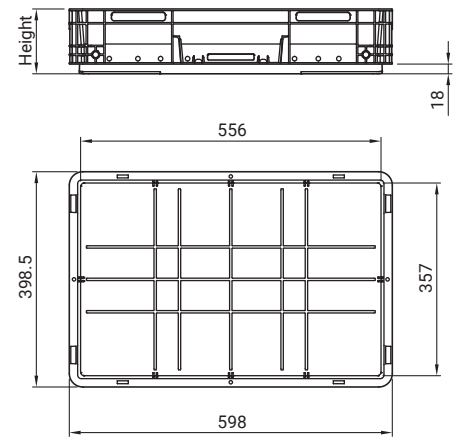
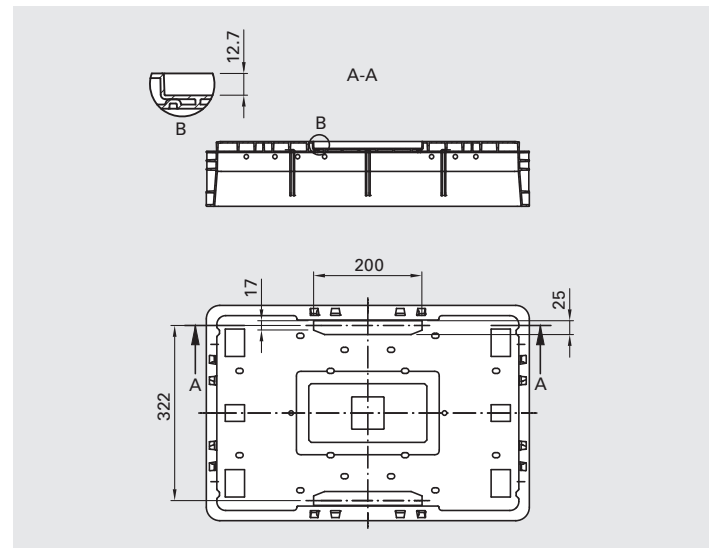
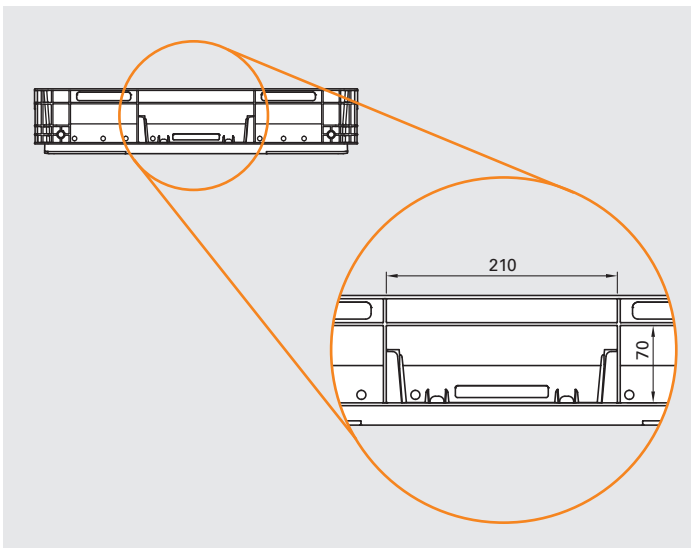
-20°C to +40°C, briefly +60°C

Load capacity

50 kg

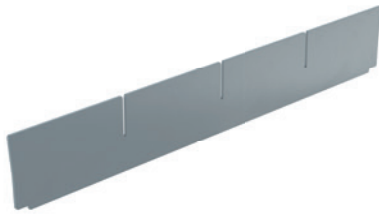
Stacking load

400 kg

**Label dimensions****Stopper grooves****Order code**

Description	Outer dimensions	Inner dimensions	Volume:	Order code	Weight/pc.
	Height	Height	Liter		
Tote 600x400x120, pack of 80 pcs.	120	100	20.1	BOX6412PAC0080	2.150 kg
Tote 600x400x220, pack of 40 pcs.	220	200	40.6	BOX6422PAC0040	2.575 kg
Tote 600x400x280, pack of 32 pcs.	280	260	52.7	BOX6428PAC0032	2.935 kg
Tote 600x400x420, pack of 20 pcs.	420	400	81.0	BOX6442PAC0020	3.865 kg

Drawings: Dimensions in mm



Longitudinal divider



Cross divider

Application

Longitudinal and transversal divider
for small parts totes 600x400

2 sections:

1 x longitudinal or 1 x transverse
divider wall

4 sections:

1 x longitudinal and 1 x transverse
divider or 3 x transverse dividers

8 sections:

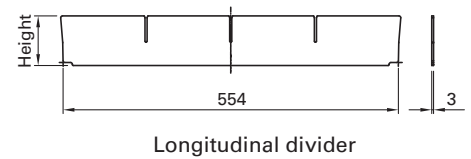
1 x longitudinal and 3 x transversal
dividers

Technical data

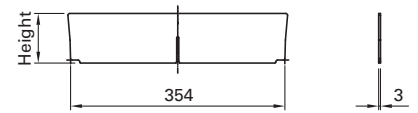
Material: PVC

Temperature resistance:

-20°C to +40°C, briefly +60°C



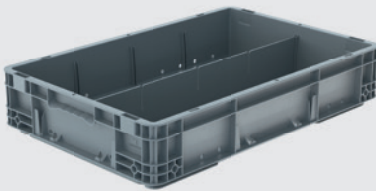
Longitudinal divider



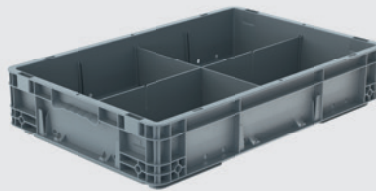
Cross divider

Application

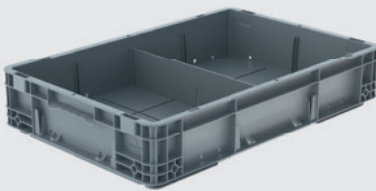
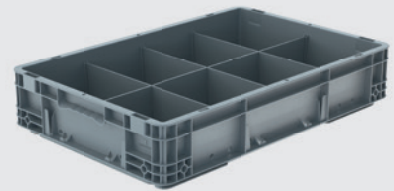
2 sections



4 sections



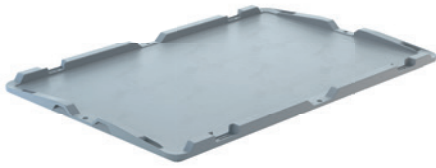
8 sections



Order code

Description	Height	Order code	Weight/pc.
Longitudinal divider 600x400x120, pack of 80 pcs.	82	BOX6413PAC0080	0.141 kg
Cross divider 600x400x120, pack of 80 pcs.	82	BOX6413PAC0080	0.091 kg
Longitudinal divider 600x400x220, pack of 40 pcs.	130	BOX6413PAC0080	0.224 kg
Cross divider 600x400x220, pack of 40 pcs.	130	BOX6413PAC0080	0.144 kg
Longitudinal divider 600x400x280, pack of 32 pcs.	190	BOX6413PAC0080	0.327 kg
Cross divider 600x400x280, pack of 32 pcs.	190	BOX6413PAC0080	0.211 kg
Longitudinal divider 600x400x420, pack of 20 pcs.	330	BOX6413PAC0080	0.568 kg
Cross divider 600x400x420, pack of 20 pcs.	330	BOX6413PAC0080	0.367 kg

Drawings: Dimensions in mm



Standard lid



Hinged lid



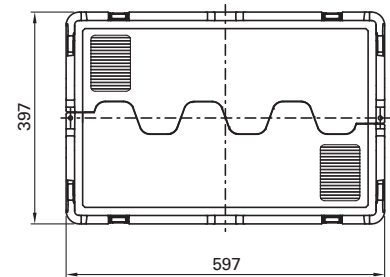
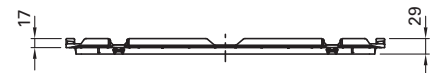
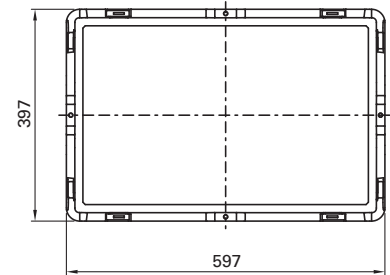
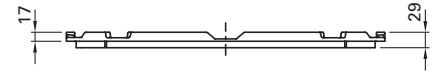
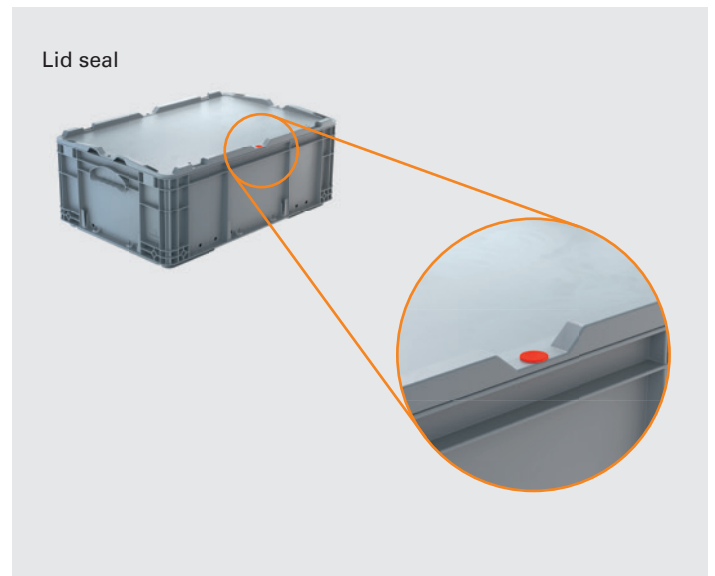
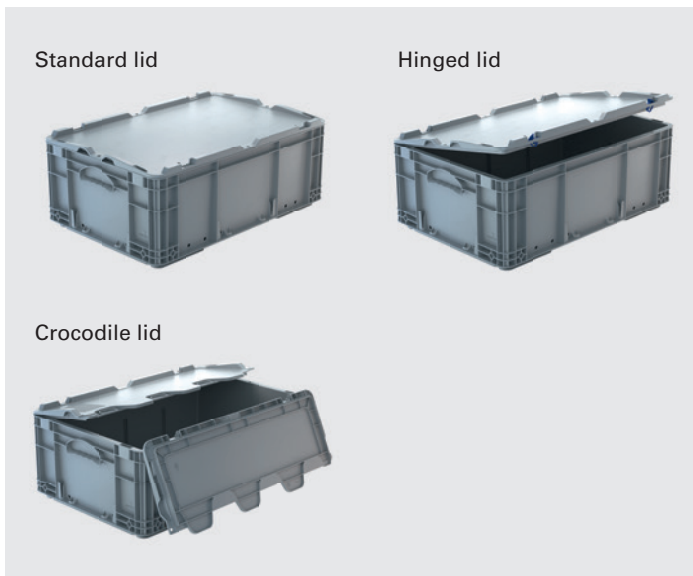
Crocodile lid

Application

Standard, hinged and crocodile lids,
as well as lid seal for small parts totes
600x400

Technical data

Material: PP
Temperature resistance:
-20°C to +40°C, briefly +60°C

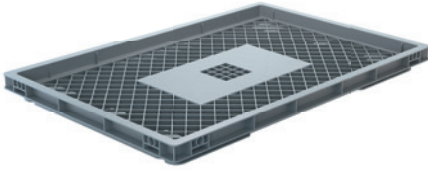
**Lid application****Lid seal application****Order code**

Description	Order code	Weight/pc.
Standard lid 600x400, pack of 200 pcs.	BOX6401PAC0200	0.680 kg
Hinged lid 600x400, pack of 200 pcs.	BOX6402PAC0200	0.700 kg
Crocodile lid 600x400, pack of 200 pcs.	BOX6403PAC0200	0.710 kg
Seal, pack of 1000 pcs.	BOX6404PAC1000	0.001 kg

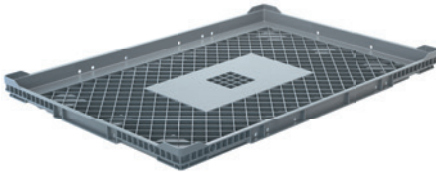
Drawings: Dimensions in mm

BOX 6_4_

Tray 600x400 / 625x425



Tray 600x400



Tray 625x425

Application

Tray, compatible with the entire Robotunits Tote System:

- Dimensionally stable
- Automatable
- Stackable
- Low noise on conveyor lines
- Identification through side and bottom recesses for coding (e.g. data matrix)
- Stopper grooves
- Water drainage openings

Technical data

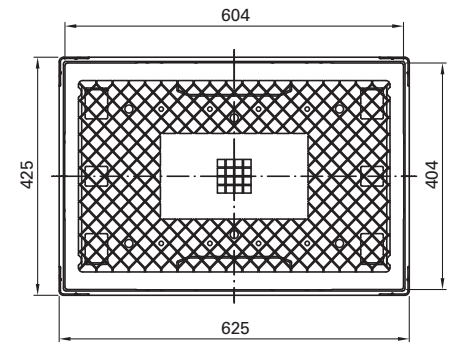
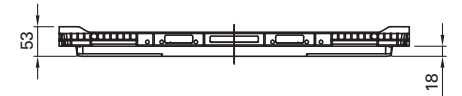
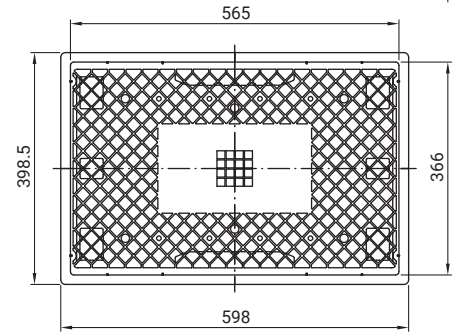
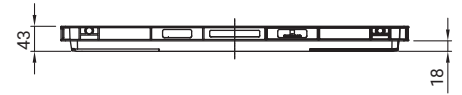
Material: PP, ESD is available on request

Temperature resistance:

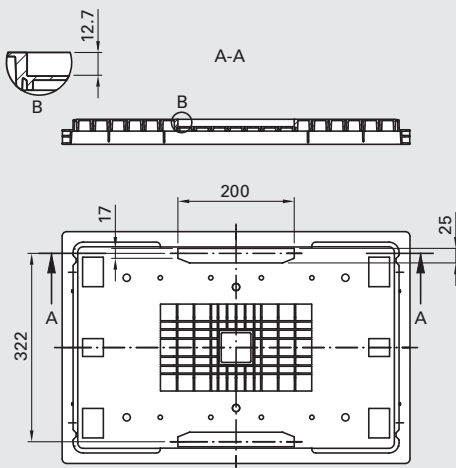
-20°C to +40°C, briefly +60°C

Load capacity

50 kg



Stopper grooves



Application

Tray 600x400



Tray 625x425



Order code

Description	Order code	Weight/pc.
Tray 600x400, pack of 344 pcs.	BOX6040PAC0344	1.450 kg
Tray 625x425, pack of 140 pcs.	BOX6242PAC0140	1.550 kg

Drawings: Dimensions in mm