



Box Carrier

Supplementary Assembly Instructions

Table of contents

- 1. **General information** 3
 - 1.1 Manufacturer of the system..... 3
 - 1.2 Introduction / Purpose of the Operating or Assembly Instructions..... 3
 - 1.3 Version..... 3
- 2. **Safety**..... 4
 - 2.1 General information 4
 - 2.2 Reasonably foreseeable misuse 4
- 3. **Transportation**..... 4
 - 3.1 Storage/transportation conditions 4
 - 3.2 Transportation equipment requirements 4
- 4. **Mechanical design**..... 5
- 5. **Specifications**..... 5

1. General information

1.1 Manufacturer of the system

Robotunits GmbH
Dr. Walter Zumtobel Str. 2
A-6850 Dornbirn
Tel. +43 5572 22000 200
Fax +43 5572 22000 9200
www.robotunits.com

1.2 Introduction / Purpose of the Assembly Instructions

Box Carriers are considered as partly completed machinery (Machinery Directive 2006/42/EC, Art. 2g), and this document is accordingly considered a set of Assembly Instructions. The Declaration of Incorporation required for this purpose can be found in the enclosed documents.

The Operating and Assembly Instructions for the Powered Roller Conveyor must also be observed when installing, operating and servicing the Box Carrier!

1.3 Version

Version	Type	Date
01	New document	2025-06-18

2. Safety

2.1 General information

Operator safety and fault-free operation of the partly completed machinery can be ensured only if original machine parts are used.

2.2 Reasonably foreseeable misuse



- Do not operate at ambient temperatures outside the defined range (+2 bis +40°C).
- In regards to atmospheric humidity, the limit values of protection class IP54 must be observed.
- Using the partly completed machinery in potentially explosive atmospheres is prohibited.

3. Transportation

3.1 Storage/transportation conditions



The partly completed machinery must be secured against tipping over during transportation and storage. Do not store outdoors.

3.2 Transportation equipment requirements

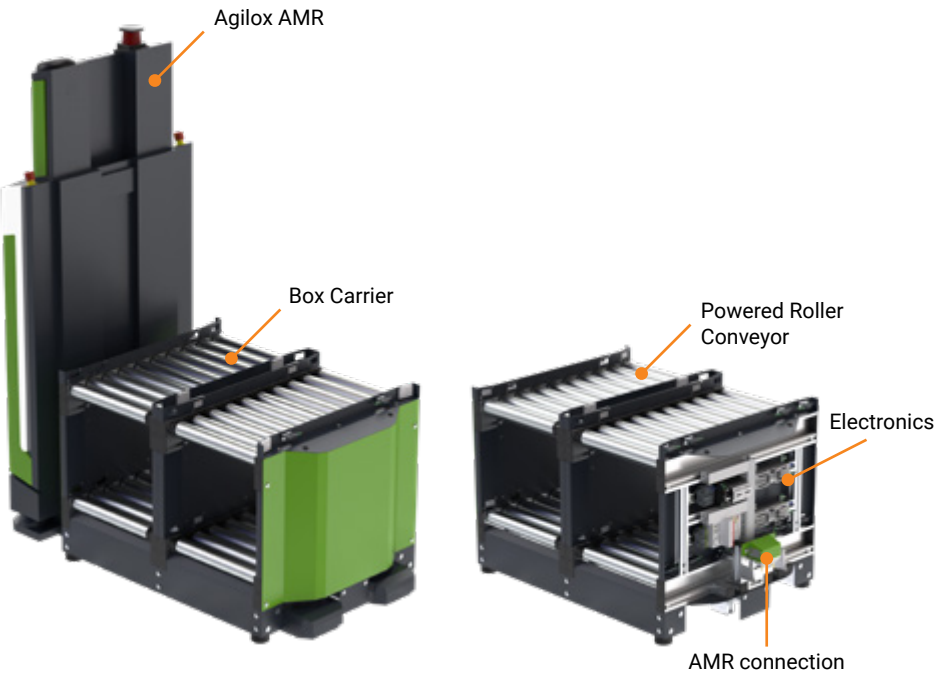


Consider the center of gravity when lifting the partly completed machinery. Standing under the load is prohibited.



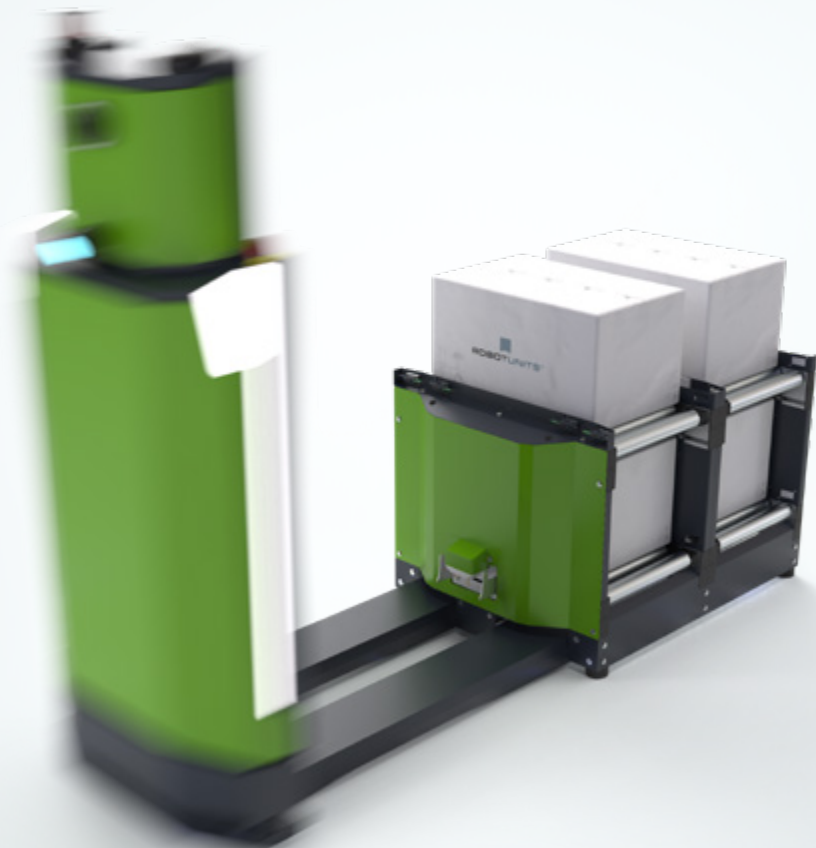
Suitable transportation equipment must be used.

4. Mechanical design



5. Specifications

Description	
Item number	
Purchase number	
Serial / manufacturer number	
Year of construction	
End customer	
Max. permissible payload	



We reserve the right to alter technical specifications at any time.
We assume no liability for typesetting and printing errors.

Austria • Germany • Switzerland • Italy • France • Spain • Czech Republic • USA • Australia

www.robotunits.com