

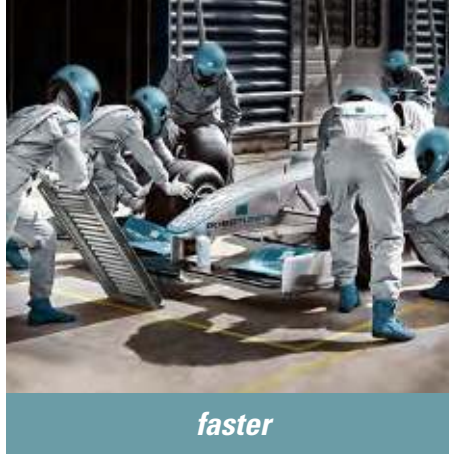


**INGENIOUSLY SIMPLE**  
**SIMPLY INGENIOUS**

**The Plug-and-Play Roller Conveyor System**



*simpler*



*faster*



*more flexible*

**INGENIOUSLY SIMPLE**  
**SIMPLY INGENIOUS**

***“Make it easy  
for yourself!”***

***No matter what you are planning – with  
our flexible Modular Automation System,  
you are guaranteed to succeed in every  
project quickly, easily and safely.***

“More with less” is the philosophy of Robotunits. We have developed our Modular Automation System with this in mind. This is because we are convinced that it is not the number of components that is crucial. It is much more important that they are individually fully developed, perfectly matched to each other and thus fully compatible. Whether in design, logistics, assembly or storage: The Robotunits Modular Automation System guarantees you maximum possibilities with minimal components. Even saving time and costs will become as easy as child’s play for you. Get started!



Conveyor Technology



Linear Motion System



Material Handling System  
PickStar



Extrusion and  
Fastening Technology

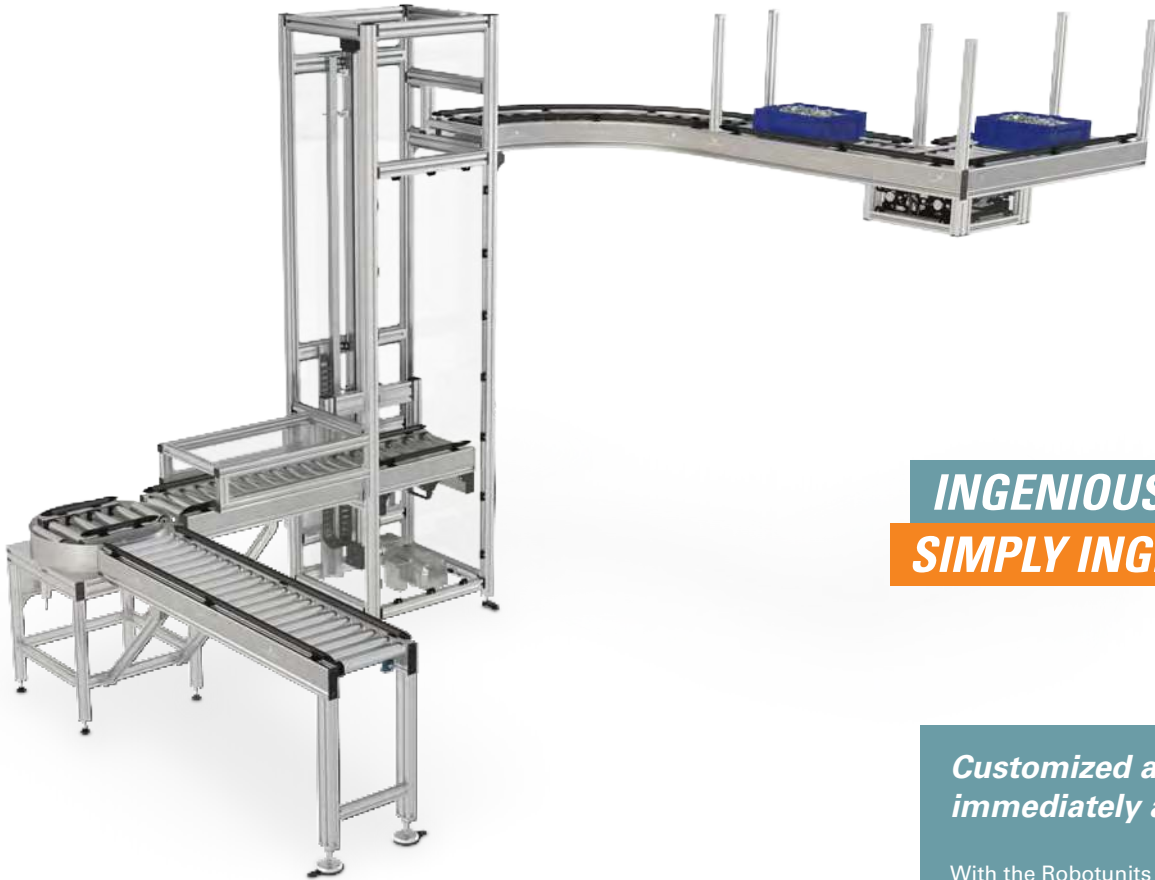


Safety Fence System



Multifunctional Accessories

## *The Robotunits Roller Conveyor System*



**INGENIOUSLY SIMPLE**  
**SIMPLY INGENIOUS**

### **Facts:**

- Various roller conveyor modules
- Plug-and-Play, fully integrated control electronics
- Power transmission via Poly-V belt, with integrated protection guard

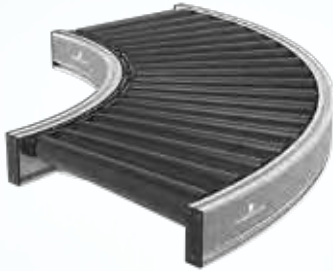
### **Your benefit:**

- Modular layout enables zero pressure accumulation, energy-efficient conveying
- Immediately applicable, time and cost-saving
- Safe and low maintenance

### **Customized and immediately applicable**

With the Robotunits 24V roller conveyor, your conveyed goods are transported gently and completely according to your individual requirements. Our multi-talented is ideally suited for the zero pressure accumulation conveying of general cargo, boxes or other containers. Thanks to the completely pre-installed control electronics, the roller conveyor can be used immediately.

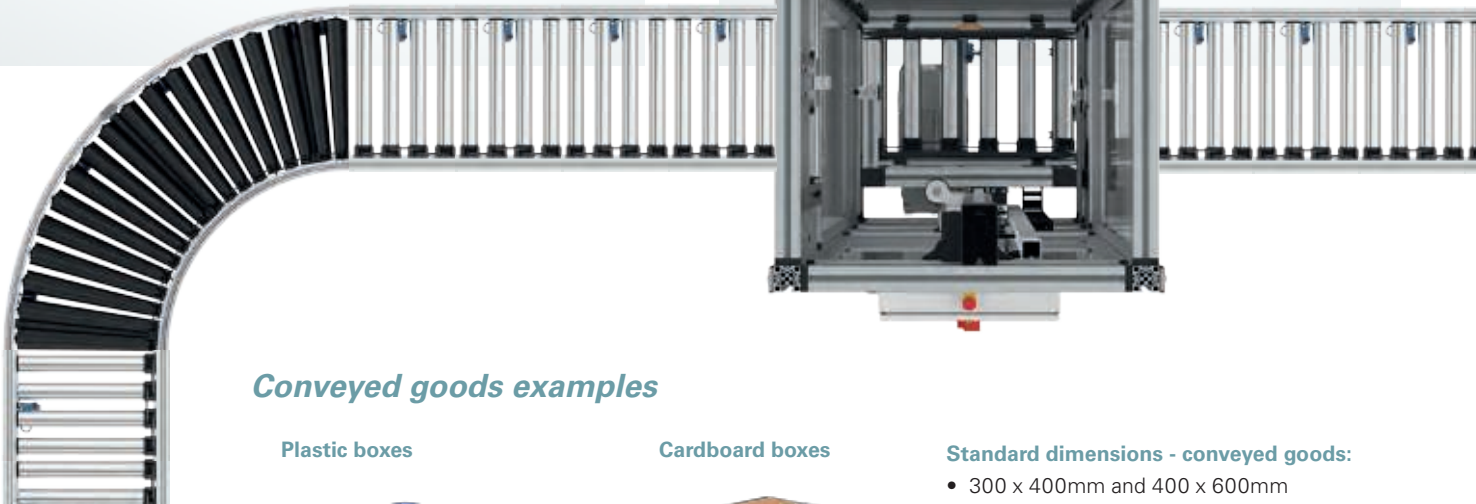
## Roller Conveyor Curve



- Standard angles: 45° and 90°, combinable to 135° and 180°
- Flexible and fixed side guides possible
- Standard support frame available

## Lift Station

- Conveying on two levels, stroke in standard up to 5m
- For conveyed goods up to 50kg in dimensionally stable containers
- Complete Robotunits conveyor technology can be integrated in the lift station



## Conveyed goods examples

Plastic boxes



Cardboard boxes



### Standard dimensions - conveyed goods:

- 300 x 400mm and 400 x 600mm
- Special dimensions upon request

### Standard values - Roller Conveyor system:

- Speeds from 10 to 30 m/min
- Temperature range from +2°C to +40°C
- Max. conveyed goods weight 50kg

## Roller Conveyor Straight

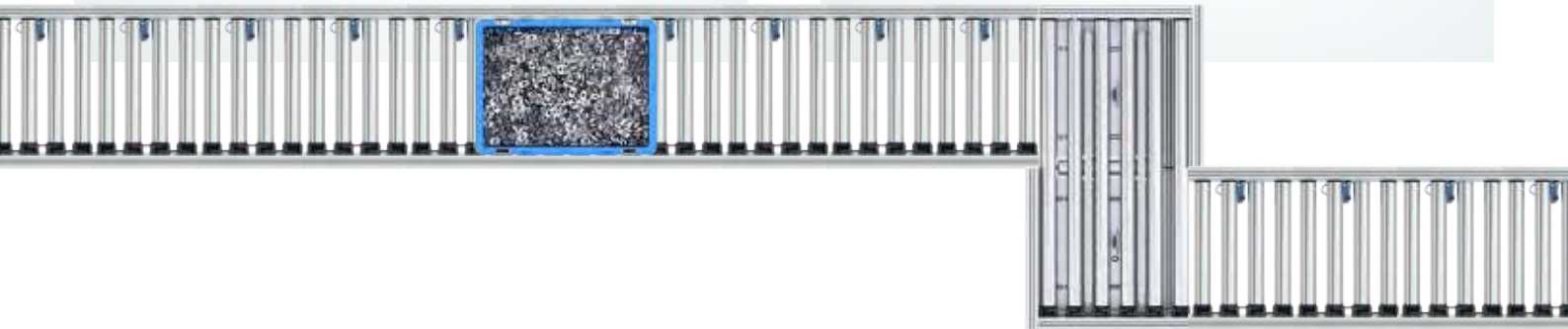


- Plug-and-Play, fully integrated control electronics
- Power transmission via Poly-V belt, with integrated protection guard
- Fully compatible in the entire modular automation system

## Transfer Unit 90°



- Transfer angle: 90° at both sides
- Safe, compact system
- Fully integrated control electronics



## Controls for all Roller Conveyor components

### Controller



CONVEYLINX Ai2



MOTIONLINX Ai

### Controls



## Merge

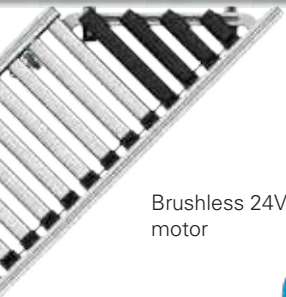


- For merging at an angle of 45°
- Merging of multiple branch lines in one main line
- Freely integratable and adjustable (e.g. priority rule)

## Turntable

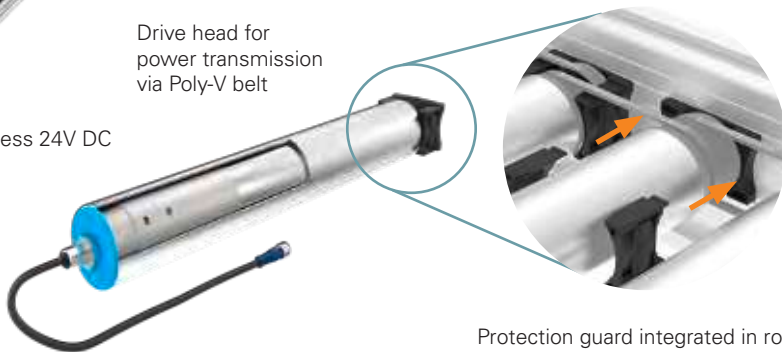


- Rotation range: steplessly configurable from 0° to 270°
- Individual distribution of conveyed goods in the correct position
- Can be combined with roller / belt / timing belt and modular belt conveyors



Drive head for power transmission via Poly-V belt

Brushless 24V DC motor



Protection guard integrated in roller

### Advantages compared to 230/400V:

- Less energy consumption and operating costs
- Less wear and therefore less maintenance
- Reduced noise level

## Conveyor Technology Accessories: Side Guide



Belt Conveyor  
Fixed - integrated



Belt Conveyor  
Adjustable with overhang



Roller Conveyor  
Fixed - integrated (only with straight)



Roller Conveyor  
Fixed



Roller Conveyor  
Adjustable with overhang



Roller Conveyor  
Adjustable without overhang



Timing Belt Conveyor  
Adjustable with overhang



Modular Belt Conveyor  
Adjustable with overhang

### Facts:

- Quick and simple assembly with only one tool
- Few, multifunctional components
- Developed for conveyor technology, compatible with the entire modular system

### Your benefit:

- Time and cost-saving
- Highest flexibility in the application (straight, curve, incline)
- Can be integrated into existing conveyor systems and designs at any time

## Side Guide

The Robotunits Side Guide is simply and quickly assembled and adjusted, using a maximum of one tool. The plastic guide profiles can be individually adjusted on the conveyor line. Both versions, adjustable or fixed, can be inserted into the uniform 14mm t-slot of the extrusion without tools.

A wide range of applications can be achieved using few components and little effort.



***Simply faster, simply flexible,  
simply more success!***

Efficiency, flexibility and speed are increasingly crucial for economic success.

At Robotunits we give 100 % to ensure that our customers always have a head start in terms of delivery, design and assembly times. This is guaranteed by our unique Modular Automation System, which offers a maximum of possibilities and advantages with a minimum of components. In terms of flexibility, variety, design and assembly, we satisfy the highest technical demands and offer enormous savings potential. This means that our customers not only enjoy their work more, but also quite simply enjoy more success.



***Outstanding Quality***



***Uncompromising Service***



***Fastest Delivery Times***

USA · Australia · Austria · Germany · Switzerland · France · Italy · Spain

[www.robotunits.com](http://www.robotunits.com)